



turners



Rupertswood Terrace, Ilfracombe, EX34 9EW

£285,000





£285,000

Overboard, 12 Rupertswood Terrace

Ilfracombe, EX34 9EW

Perched in an elevated position overlooking the iconic Ilfracombe Harbour, this beautiful four bedroom terraced home offers breathtaking sea views from every level. Currently operating as a highly successful holiday let, the property has been finished to an exceptional standard throughout, seamlessly blending modern comforts with coastal charm. The south-facing rear courtyard is a private sun trap—an idyllic oasis perfect for unwinding after a day by the sea. A rare opportunity to acquire a stylish coastal retreat in one of North Devon's most sought-after locations.



The ground floor is an impressive open-plan space, thoughtfully designed for both relaxation and entertaining. At one end, a spacious fully fitted kitchen features sleek cabinetry, integrated appliances, and a central breakfast bar, ideal for casual dining. Patio doors lead directly out to a south facing, two tiered courtyard, a true sun trap and peaceful oasis.

At the opposite end, the inviting living area is centred around a cosy log burner, perfect for cooler evenings. A large bay window houses a dining table and chairs, offering a stunning vantage point over Ilfracombe Harbour and the sea beyond. The space is finished with warm wooden flooring throughout and tasteful, coastal-inspired décor.

Completing the ground floor is a separate laundry room and a stylish, modern downstairs bathroom, providing convenience and functionality.





The first floor continues to impress, offering two generously sized bedrooms and a beautifully appointed family bathroom.

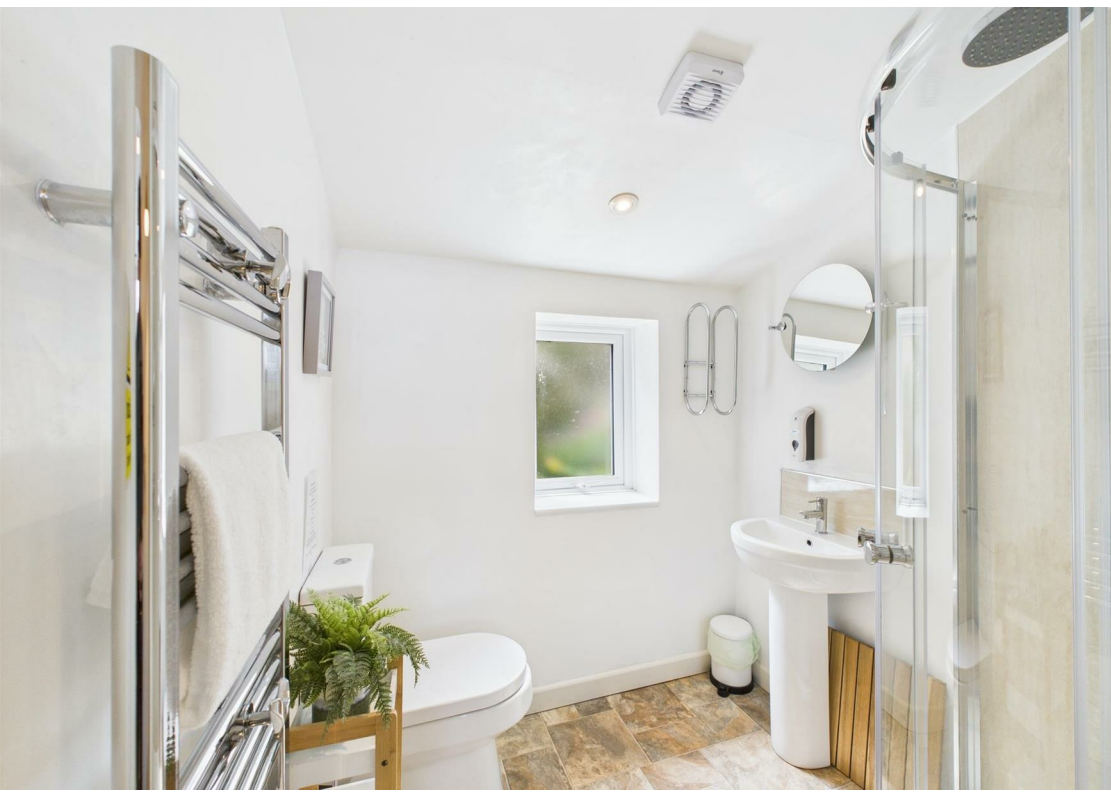
The standout space is the current primary bedroom, cleverly styled as an additional lounge. Bathed in natural light from multiple windows, this stunning dual-aspect room boasts panoramic sea views, a striking period fireplace, and a bright, coastal-inspired décor that enhances its serene atmosphere. It's a truly flexible space that can serve equally well as a luxurious bedroom or an elevated living retreat.

To the rear, the large second bedroom enjoys peaceful garden views and offers plenty of room for a double bed and furnishings, ideal for guests or family.

Completing the floor is a stylish and modern family bathroom, fully tiled and featuring a walk-in shower, separate bath, WC, and pedestal sink. An obscure window provides natural light while ensuring privacy, and contemporary finishes give the space a crisp, spa-like feel.

The top floor comprises two well-proportioned double bedrooms, each offering comfort and versatility. One of the bedrooms enjoys truly expansive sea views, creating a stunning backdrop that's sure to impress, while the second bedroom provides a peaceful and private space, ideal for guests, children, or as a dedicated home office. Both rooms are light and airy, making the most of the property's elevated position and charming character.

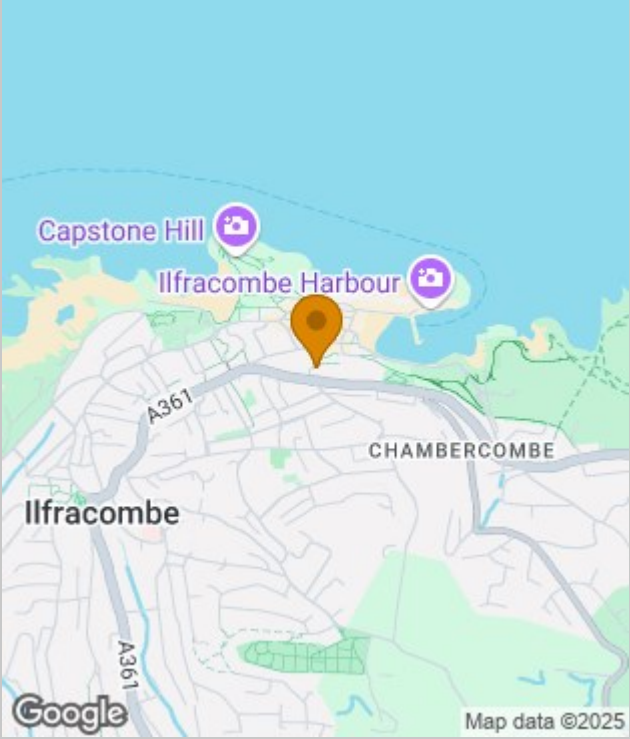




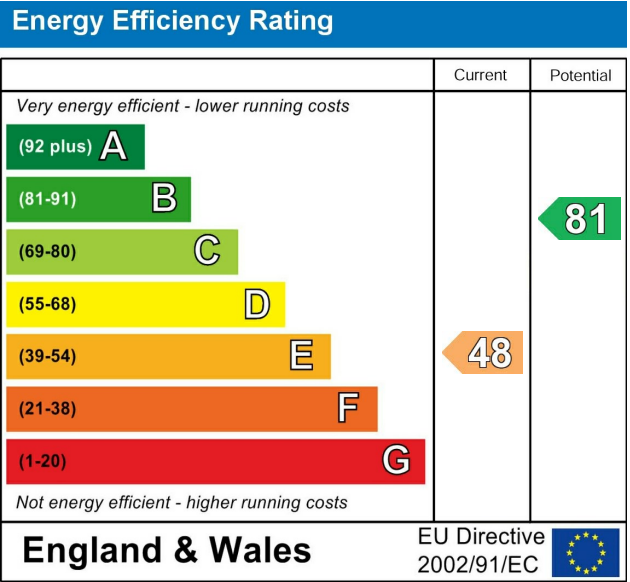
Floor Plans



Location Map



Energy Performance Graph



Viewing

Please contact our Turners Property Centre Office on 01271 866421 if you wish to arrange a viewing appointment for this property or require further information.

The particulars are set out as a general outline only for the guidance of intended purchasers or lessees, and do not constitute, any part of a contract. Nothing in these particulars shall be deemed to be a statement that the property is in good structural condition or otherwise nor that any of the services, appliances, equipment or facilities are in good working order. Purchasers should satisfy themselves of this prior to purchasing.

135 High Street, Ilfracombe, Devon, EX34 9EZ
Tel: 01271 866421 Email: sales@turnerspropertycentre.co.uk
<https://www.turnerspropertycentre.co.uk>